



SERIES AZ 9200

SINGLE STAGE REGULATOR

Flow Rates to 2,000 SLPM (71 scfm)

- SS 316L construction
- High performance
- 10 μ m. surface finish (25 μ m. optional)
- High flow with low particle generation
- 3/4 and 1 inch port size
- Tied diaphragm design
- Vacuum to 300 psig (21 bar) inlet
- Installation and operating instructions available at www.aptech-online.com in the Tech Briefs section

Operating Parameters

Source pressure	AZ 9200	vacuum to 300 psig (21 bar)
Delivery pressure	AZ 9202	1 to 30 psig (0.07 to 2 bar)
	AZ 9206	2 to 60 psig (0.14 to 4 bar)
	AZ 9210	2 to 100 psig (0.14 to 7 bar)
	AZ 9215	5 to 150 psig (0.34 to 10 bar)
Proof pressure		450 psig (31 bar)
Burst pressure		1,500 psig (103 bar)

Other Parameters

Inlet/outlet connectors	3/4 or 1 inch face seal or tube weld
Flow coefficient (Cv)	1.6
Internal volume	2.2 in ³ (36 cm ³)
Operating temperature	-40° to +160°F (-40° to +71°C)
Surface finish	10 μ m. (0.25 μ m) Ra avg.
	25 μ m. (0.62 μ m) optional
Inboard leakage	2 x 10 ⁻¹⁰ sccs
Outboard leakage	1 x 10 ⁻⁹ sccs He
Leakage across seat	4 x 10 ⁻⁸ sccs He
Installation	surface or panel (optional)
Delivery pressure rise	7 psig per 100 psig source pressure drop

Materials

Series AZ 9200 S	
Wetted Parts	
Body, nozzle	stainless steel 316L*
Poppet	stainless steel 316L
Diaphragm	Hastelloy® C-22®
Finish	electropolished and passivated
Seat	PFA

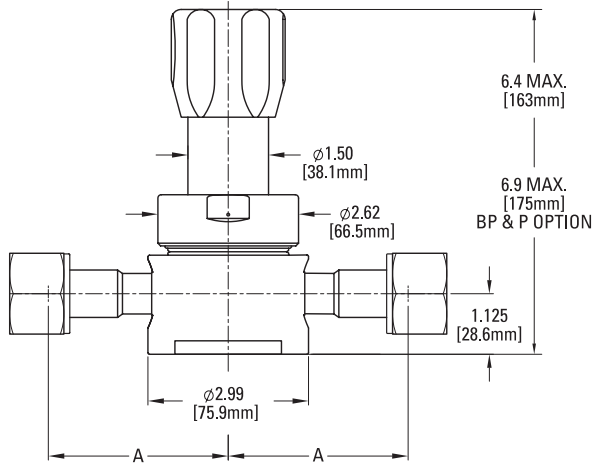
All specifications subject to change without notice.

*Please refer to product note PN 414 regarding single melt 316L SS material.

Hastelloy® C-22® Haynes Corporation

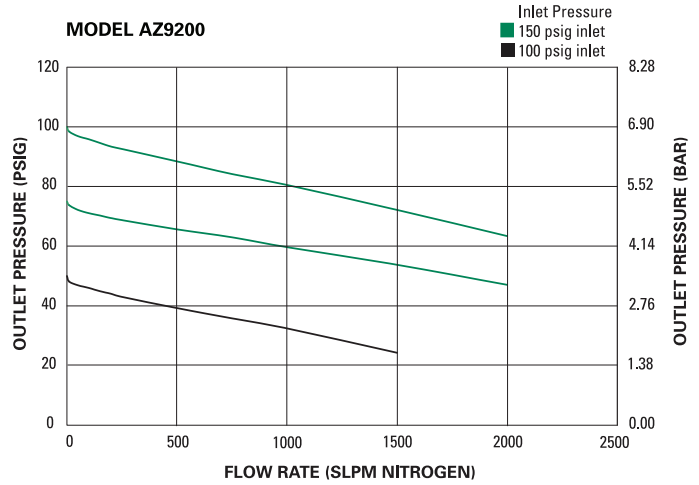
SERVICE AND SUPPORT BEYOND COMPARE

DIMENSIONAL INFORMATION

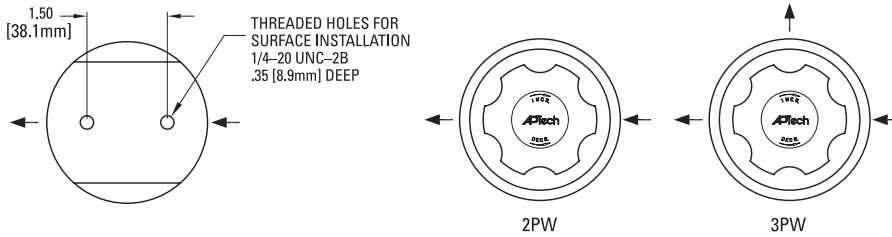


Connection	A	
	in	mm
FV12, MV12	3.39 ±.03	86.1
FV16, MV16	3.67 ±.03	93.2
TW12, TW16	3.00 ±.03	76.2

All dimensions in inches (mm).
Metric dimensions are for reference only.



PORTING CONFIGURATIONS



CAUTION: Product selection is the sole responsibility of the user, regardless of any recommendations or suggestions made by the factory. The user shall make selections based upon their own analysis and testing with regard to function, material compatibility and product ratings. Proper installation, operation and maintenance are also required to assure safe, trouble free performance.

ORDERING INFORMATION

Sample Order Number

AZ 9210SQ 3PW FV12 FV12 1 P

AZ 9210 | Series

AZ 9202 = 1-30 psig (.07 to 2 bar)
AZ 9206 = 2-60 psig (.14 to 4 bar)
AZ 9210 = 2-100 psig (.14 to 7 bar)
AZ 9215 = 5-150 psig (.34 to 10 bar)

S | Material

S = Stainless steel (SS)

Q | Surface Finish Option

Q = 25 μ m. Ra avg.

3PW | Ports

2PW = 2 ports butt weld
3PW = 3 ports butt weld

FV12 FV12 | Connections Inlet / Outlet

FV12 = 3/4 inch face seal female
MV12 = 3/4 inch face seal male
TW12 = 3/4 inch tube stub weld
FV16 = 1 inch face seal female
MV16 = 1 inch face seal male
TW16 = 1 inch tube stub weld

1 | Delivery Gauge*

0 = No gauge
V3 = 30-0-30 psig/bar
L = 30-0-60 psig/bar
1 = 30-0-100 psig/bar
H = 30-0-160 psig/bar

* Standard gauge port is 1/4 inch face seal male (1/4 inch female available).

P | Options

P = Panel installation**
BP = Bonnet vent port

** Panel hole 1.56" diameter.