



# Series AP 3700, AP 3800 & AP 3900 Monoblock Configurations

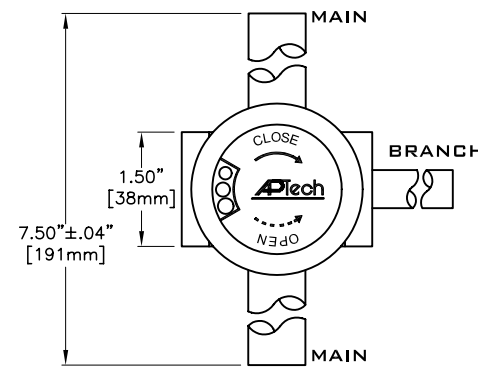
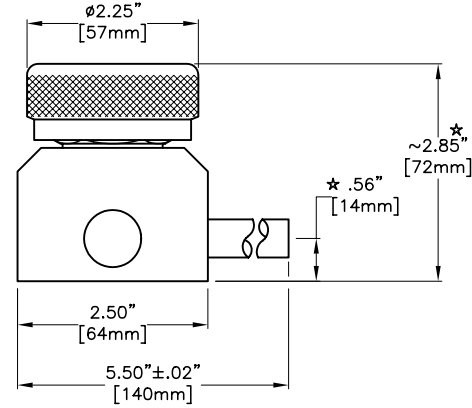
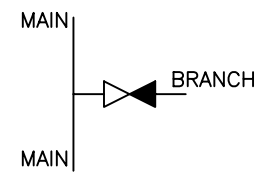
AP Tech Technical Bulletin 204D

A  
P  
3  
7  
0  
0  
/  
A  
P  
3  
8  
0  
0  
&  
A  
P  
3  
9  
0  
0  
M  
O  
N  
O  
B  
L  
O  
C  
K

**Table 1. Monoblock Configuration**

**AP3710, AP3810 & AP3910**

Single Horizontal Tee

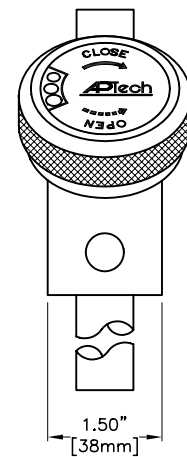
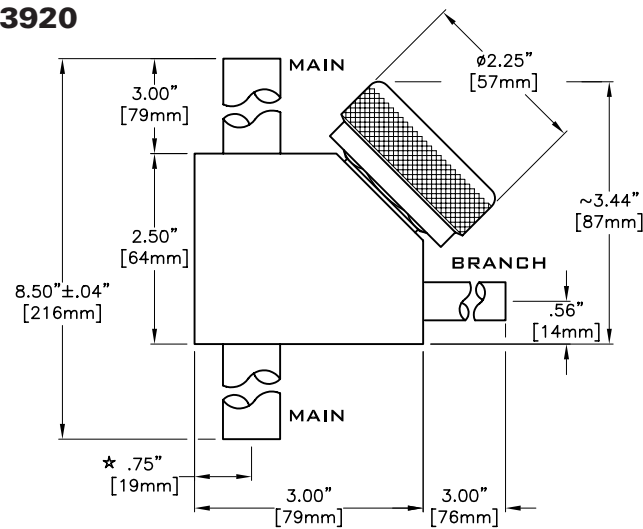
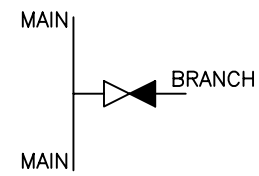


AP3810 shown

\* VARIES FOR DIFFERENT SIZES OF MAIN

**AP3720, AP3820 & AP3920**

Single Vertical Tee

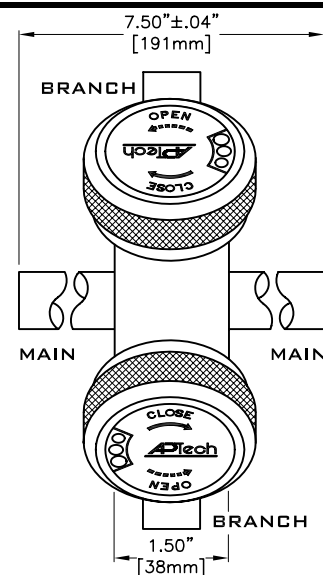
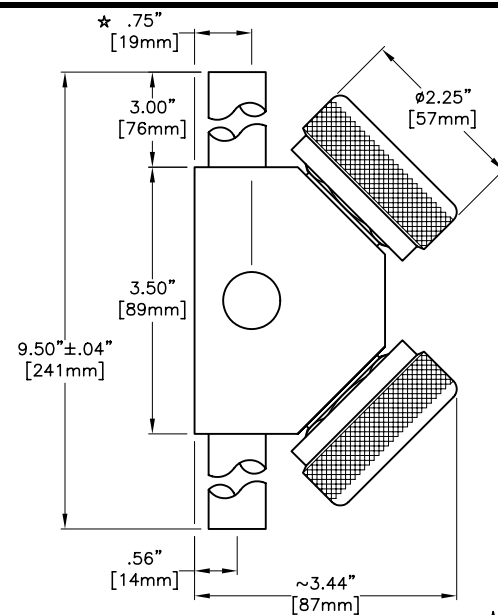
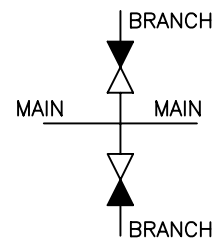


AP3820 shown

\* VARIES FOR DIFFERENT SIZES OF MAIN

**AP3730, AP3830 & AP3930**

Dual Horizontal Cross

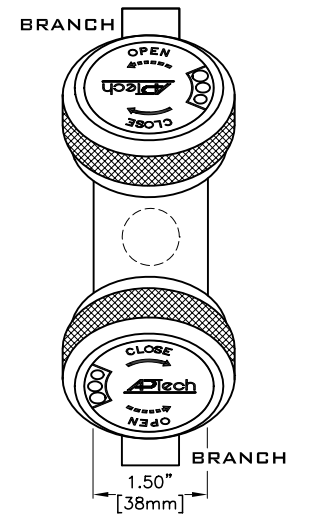
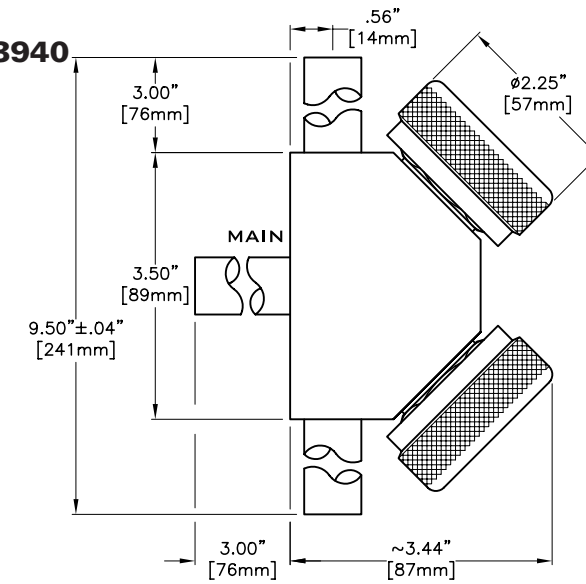
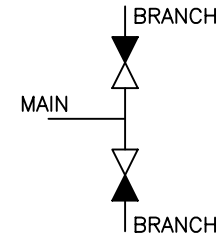


AP3830 shown

\* VARIES FOR DIFFERENT SIZES OF MAIN

**AP3740, AP3840 & AP3940**

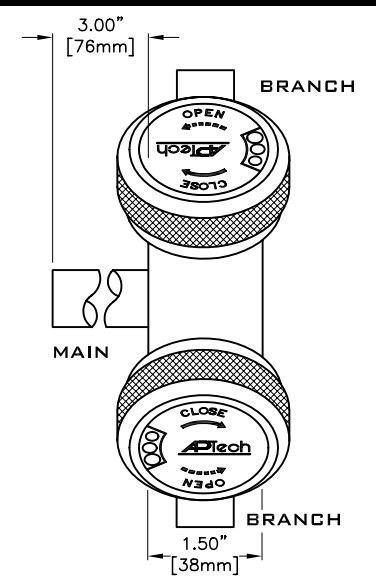
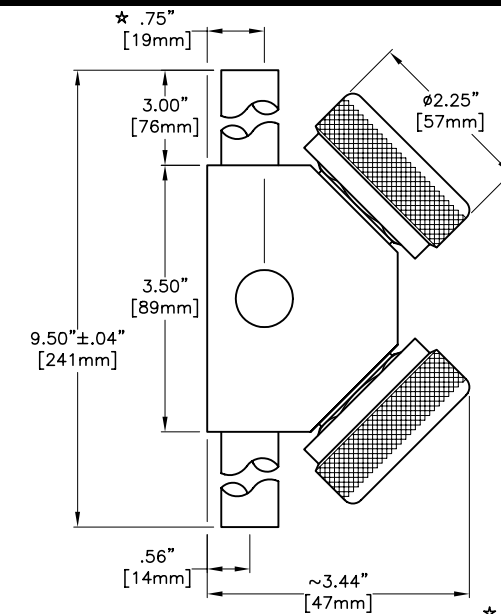
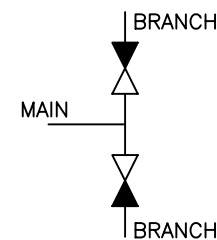
Dual Vertical Tee



AP3840 shown

**AP3750, AP3850 & AP3950**

Dual Horizontal Tee



AP3850 shown

\* VARIES FOR DIFFERENT SIZES OF MAIN

**Table 2. Ordering Information**

Series AP38	20 Configuration	S Material	M Material Surface Finish	TW16 - TW8 Connection Main Branch	B Purge Port Branch	VS Options
AP37 = Air Actuated AP38 = Manual AP39 = Manual, LOTO						VS = Vespel Seat C = Capped Port
	10 = Single Horizontal Tee 20 = Single Vertical Tee 30 = Dual Horizontal Cross 40 = Dual Vertical Tee 50 = Dual Horizontal Tee				B = Branch Purge Port O = No Purge Port	
	S = 316L stainless steel AOD/VAR					
	M = 10 μin. Ra (standard) V = 7 μin. Ra X = 5 μin. Ra					
				TW6 = 3/8 inch tube weld stub TW8 = 1/2 inch tube weld stub TW12 = 3/4 inch tube weld stub TW16 = 1 inch tube weld stub TW24 = 1 1/2 inch tube weld stub <small>(TW16 &amp; TW24 available on main only)</small>		
						NOTE: Further connections are available. Please consult factory.